

THE CORRAL

THE AMERICAN BEEFALO ASSOCIATION

Issue 3

July 2022



In this Issue

- Letter from the President**
- Missouri State Fair Update and Info**
- Recipe "Weeknight Ground Beefalo Tacos"**
- Incentive Program**
- From the Operations & Registrar Desk**
- Article- Beef Cattle Production & Life Cycle.**
- Board Member Contact Information**

LETTER FROM THE PRESIDENT

By: Leonard Muehr

Hello Beefalo Breeders!

This past month has been very exciting for the Beefalo Breed. At one of our board meetings John Fowler mentioned some news agency wanted to interview him and others in the Missouri area about Beefalo.



Leonard Muehr & Family

Breeders have been interviewed in the past and we have seen some interest which is always good for the breed. Due to past experience , I personally was not ready for the interest that has come from this interview! I was truly shocked. On June 7,2022, National Public Radio(NPR) published an article titled-"Beefalo-a bison cattle hybrid, is being touted as the healthy meat of the future.: written by Jonathan Ahl. On June 9th I had three requests for information on Beefalo due to this article.

SAVE THE DATE!

March 24-March 25, 2023

**Spring Beefalo Showcase
& Sale**

**Location: Gastof Amish
Village**

Montgomery, Indiana

gastofamishvillage.com

Past Event Photos

Did you get snapped at our last event? Or perhaps taken or "snapped" any photos at previous events and want to share them? Send them to our operations manager!
operations.americanbeefalo@gmail.com



A letter from the President

Continued from Page 1

The following day, I got a request for an interview by the Chicago radio station, then a station out of Montreal, Canada. A day or so later, I was contacted by a radio station in South Dakota and then one in Wisconsin. Our visits to www.americanbeefaloassociation.com have increased from around 300 visits in a week to over 1100. On June 15, 2022, The Food Institute published an article titled "Is Beefalo the Next Big Meat?"-by Kelly Beaton. This is very good for all of us as Breeders and Producers of Beefalo! If you are contacted and asked to do an interview, please feel free to do so. However, it is imperative that we are passing on the same information and representing Beefalo in the correct manor. A good place to start is going to our website by refreshing your memory of the positive attributes of Beefalo and its Nutritional Values. If you are concerned about what to say, would like pointers, or talking points, please reach out to any of the Board of Directors or myself. I always enjoy talking Beefalo, just ask my wife!

Recently, you may have received a call from one of the Board Members or volunteers. We would like to have all breeders listed on the website, but before we do that, we want to check with everyone and make sure you are ok with your information being listed on the ABA website. We want to make sure we respect everyone's right to privacy. If you have not received a call, it could be your phone did not accept the call, or we have the wrong number for you. Please send an email to

the Operations Manager with your information.

(operations.americanbeefalo@gmail.com) or you are welcome to email me. We want to make sure everyone that wants to be listed on the website has their opportunity.

Due to the increase in prices in every aspect of our lives we also need to make some increases in our costs to cover ABA expenses. These changes will not take effect until January 1, 2023. So if you have been on the the fence about sending your paperwork now is a great time! You can send your paperwork with confidence and know it will be handled in a timely manner, the ABA website is also a great place to fill in your forms and send it digitally.

In May we added a new set of pink cowgirl boots to the collection in the hallway! Lenci Amarisa Muehr has joined me on a couple of our ABA board meeting calls(as a non-voting member, of course!) as well as gone with the girls to bottle feed the calves. These past two months have flown by, but she will be showing Beefalo before we know it with her 4 sisters!

Progress has been made with 1-800-Beefalo. We have one more loophole to overcome and then it should be back in operation. Once that happens, you will be able to contact any board member simply by dialing that number and choosing their line. We look forward to this opportunity. As always, if you have questions about anything in regard to the American Beefalo Association, please feel free to give me a call or text, (281)923-8549(Please leave a message if you call, I will call you back) You can also email me at rockincamelranch@gmail.com

MISSOURI STATE FAIR

SEDALIA, MO AUGUST 17-AUGUST 20, 2022

CONTACT DAVIELLE MCCOY OR DAVID MCCOY

Hello fellow Beefalo Breeders! The Missouri State Fair in Sedalia, Missouri is fast approaching! The Missouri State Fair is currently one of the two national Beefalo shows we have as breeders and a great way to market, educate, and grow the Beefalo breed. July 1, 2022 is the deadline for entries without late fees, after the first you have until the 25th to enter the show with additional late fee penalties. Registration papers are required at the time of the show. They are no longer allowing "Pending" papers at show check-in. Other breeds have abused this so ALL breeds are dealing the consequences. Again, you MUST have registration papers at the time of show check-in for the animal to be allowed to show. The earliest you can arrive is Wednesday, August 17th AFTER 8pm and animals must be in place in the barn by 8am Thursday, August 18th.

The Missouri Junior Show is Friday, August 19th at 2pm. This show is only for animal registered in their name. The American Beefalo Association will have a meeting on Friday evening at 6:30pm, location will be announced at a later date. This meeting will include dinner, conversation, and fun auction. Proceeds of the fun auction will go directly to the Evelyn Garrett Scholarship Fund. Saturday, August 20th at 12pm is the open Beefalo Show. Directly following the open show will be the all Junior Beefalo show, sponsored by the Mid America Beefalo Association. I look forward to seeing you all in Sedalia!

-Davielle McCoy

Mid America Beefalo Association
President





WEEKNIGHT GROUND BEEFALO

tacos



INGREDIENTS:

- 1 pound ground Beefalo
- 1 tsp ground cumin
- 1tsp smoked paprika
- 1/2 tsp garlic powder
- 1/2 tsp chili powder
- 1/2 tsp salt
- 1/2 tsp freshly cracked pepper

QUICK PICO DE GALLO:

- 1 pint cherry tomatoes
- 1/2 sweet onion
- 1/4 cup cilantro, chopped
- 1/2 lime, juiced
- pinch of salt and pepper



SUBMITTED BY: AMBER SAPP

Instructions:

- Heat a skillet over medium heat. Once the skillet is hot, add the ground beefalo and break it apart with wooden spoon.
- Cook, stirring and breaking apart beefalo often, until it begins to brown. Add in the cumin, paprika, garlic powder, chili powder, salt, and pepper. Stir well to disperse all the seasoning. Cook until beefalo is just browned.
- Serve ground beefalo in tacos(warm corn or flour tortillas in the oven for a few minutes), on nachos or salads. Top with your favorites or try something new!

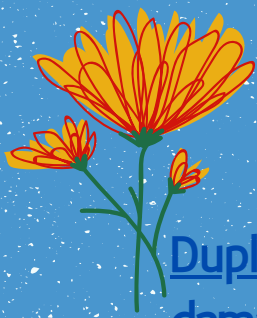


QUICK PICO DE GALLO:

- Toss the tomatoes, onion, cilantro, and lime juice together in a bowl. Season with salt and pepper.

SUGGESTIONS FOR SERVING:

- Corn or flour tortillas, warmed
- Hard shells or tortilla chips
- Grated sharp white cheddar cheese
- Black Beans
- Avocado, diced
- Fresh Cilantro
- Sour Cream
- Pickled Red Onions.



From the Operations & Registrar Desk



Duplicate Fee: If you request a copy of a registration (lost or damaged, etc) the cost will be \$10, please fill in a fee schedule and mail to operations address.

UC Davis Timeline: Check your emails if you request a DNA Kit. Your kits are emailed to you to print, attach sample to, and mail. PLEASE DO NOT MAIL TO REGISTRAR! Mail to UC Davis, address is listed on the kit/form. They perform the tests as they receive the samples, we have sent a LOT of business their way lately and they are doing great working through our requests. If there is a chance for multiple parent possibilities send them in with your application to save time. We can submit UP TO 10 sires and or dams at a time.

Mailings: Postage is done once a week.

Contact information: operations.americanbeefalo@gmail.com

Advertise with Us

We are now offering advertising with the Corral for our Members!

Feature your farm, livestock, semen, or meat for sale!

Remember the Corral is also listed on the website, for the Public to view!

Quarter Page: \$25

Half Page: \$50

Full Page: \$100

Submit your ad to operations.americanbeefalo@gmail.com

***Membership MUST be current and ad fee paid prior to print**

[Payments must be sent to 14481 Millersburg Rd. SW Navarre OH 44662](https://www.google.com/maps/place/14481+Millersburg+Rd,+SW+Navarre,+OH+44662)



AMERICAN BEEFALO ASSOCIATION



UPDATED FOR 2021-2022
**ABA MEMBER
INCENTIVE PROGRAM**

Part 1: For every five(5) animals registered; receive a \$25 credit

-Cannot be refunded in CASH.

-Retroactively begins January 1, 2022 and ends December 31, 2022

-Meat tag registrations DO NOT apply to animal registrations.

Credits can be applied toward Dues, Registrations, Meat Tags, and/or Advertising

Part 2: Refer a NEW LIFETIME MEMBER IN 2022 (begins Jan. 1, 2022) This member must list your name on the application.

-1st referral earns member \$25 for 2022 annual dues.

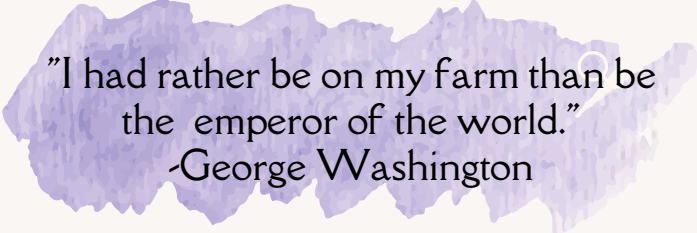
-2nd referral earns member 1 free ANIMAL ad on the ABA website.

-For each additional referral earns member free Breeder or Meat Producer ad on the ABA website.

-Expires December 31, 2022


Part 3: For every 9 Meat tags purchased, receive the tenth FREE!

-Begins January 1, 2022 and ends December 31, 2022



"I had rather be on my farm than be the emperor of the world."

-George Washington



Upon registration, the numbers will be added to the tally by the registrar. Breeder WILL NOT be responsible for keeping track of their numbers.

WELCOME NEW MEMBERS!

ROBBINS NEST RANCH

Dan & Claudia
Robbins
Boardman OR

ELKBRIDGE RANCH

Emily Oetken
Seeley Lake, MT

POND VIEW FARMS

Brad Rawson
Spartanburg, SC

AE FAMILY FARM

Justin Akerley
Fort Pierce, FL

KOH FEH FARMS

Robert Montoya
Española, NM

Have a referral? Have your customer join online or print the membership application and mail it to the Operations address. Make sure they list your name for the Incentive Program!

WWW.AMERICANBEEFALOASSOCIATION.COM



Beef Cattle Production & Life Cycle

Many producers of the Beefalo breed are involved in all facets of the beef production cycle, from the day the calf is conceived through the final slaughter stage. However, not every operation has the desire or ability to be involved in the process from start to finish. For those that are new to the cattle industry or those that only prefer certain snippets of the production cycle, let us further explore all of the processes that take a Beefalo from Farm to Table!

The production cycle can be divided into three main categories as follows:



Cow/Calf Operations

This producer owns a herd of cows that produce a calf once per year.

The cow/calf operation may also own bulls or participate in Artificial Insemination (AI). After the calves are born, they stay on the farm with their mothers for several months feeding on milk and grazing on pasture.

Stocker

Calves are weaned and moved to pasture where they continue to graze and grow. Some supplemental feed may also be offered at this stage.

Finishing

Animals either continue on a roughage diet or fed grain to meet their nutritional requirements that will allow them to grow and develop a desirable weight and meat structure until slaughter weight is reached, typically between 1,100-1,400 pounds.

The diagram on the next page outlines each phase of life and what it contributes to the corresponding production phase.

Some producers prefer to only participate in one or two areas of the cycle. For many the cost of maintaining a herd and the ever-rising feed costs, whether it be improved pasture or grain, are too much for small operations. Some prefer to only produce calves, some prefer to finish and market meat. Whatever road you find yourself taking, there is a place for each of us, one Beefalo at a time!

Beef Cattle Life Cycle



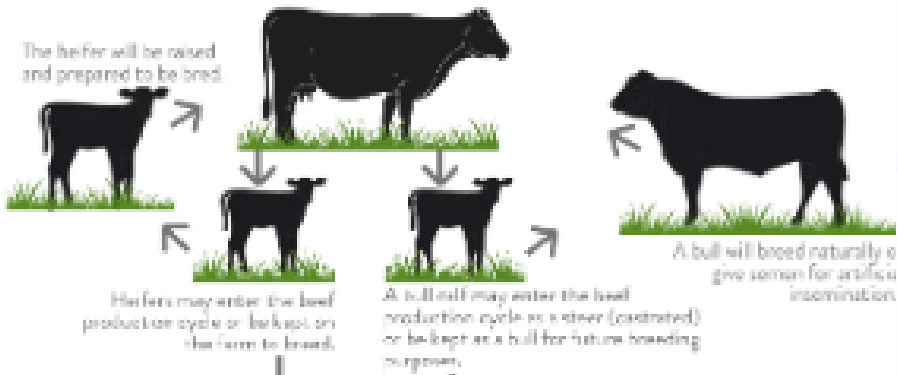
BEEF CATTLE LIFECYCLE



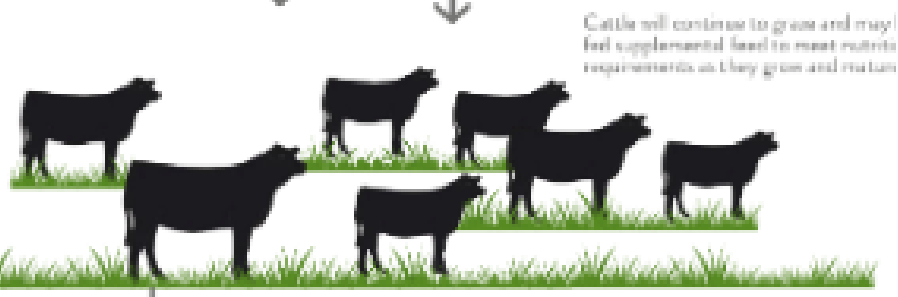
Beef cattle are bred and raised to withhold different roles within the system to help maintain the industry.

A cow will raise either a female (heifer) or male calf (bull calf).
Gestation time is 285 days.

COW/CALF



BACKGROUNDING OR STOCKER



FINISHING



Board of

Directors

-President-

Leonard Muehr(TX)

(281)923-8549

rockincamelranch@gmail.com

-Vice-President-

Brian Miller(OH)

(330)465-0626

redturbo1066@yahoo.com

-Secretary-

Lytton Bastian(ID)

(281)923-8549

rockincamelranch@gmail.com

-Treasurer-

David McCoy(MO)

(660)347-5448

4mfarms@socket.net

Dan Stricker(TN)

DanStricker@hotmail.com fortycreekfarmsbeefalo@gmail.com

(615)294-8585

Amber Sapp(GA)

(229)205-0730

John Fowler(MO)

fowlerjk@iland.net

(660)473-3135

Dana Crea(WA)

dcrea@hotmail.com

Penny Hacker-Knuckles(AR)

DoneRouinMeats@gmail.com

(979)481-0243

Office Manager/Operations

Staci Miller

operations.americanbeefalo@gmail.com